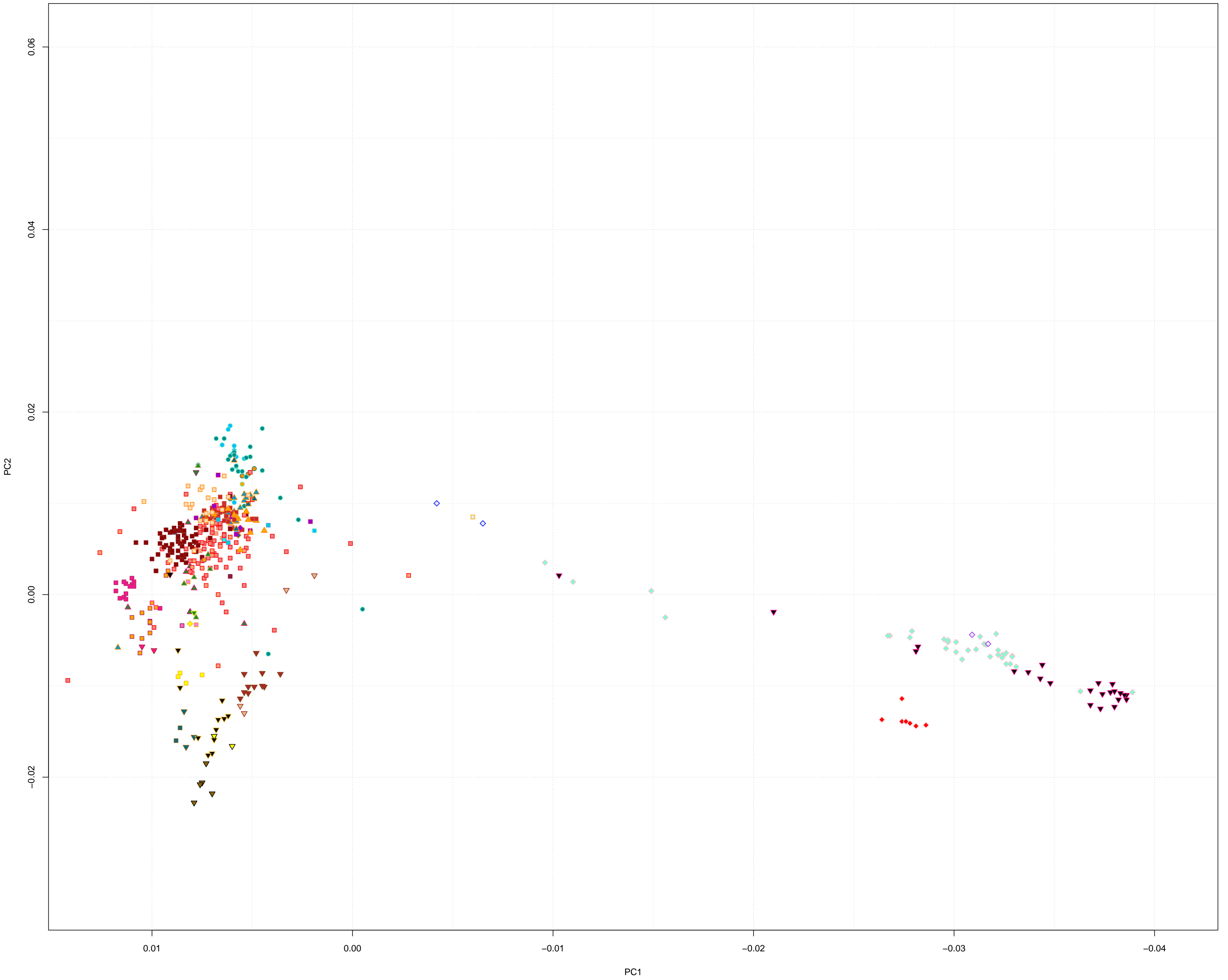


Ancient Eurasia (2020)



▼ Anatolia_MLBA	▼ Hungary_Mako_EBA	■ Europe_EBA	■ C_Iberia_BA	■ DEU_Singen_EBA	◆ Corded_Ware_Proto_Unetice_Poland	■ Denmark_LN	◆ Mongolia_LBA_4_CenterWest
■ Old_Hittite	■ Montenegro_LBA	■ Halberstadt_LBA	■ SW_Iberia_BA	■ Baltic_LBA	◆ Czech_Starounetice_EBA	■ Nordic_BA	▼ Mongolia_LBA_1_MongunTaiga
▼ Armenia_MLBA	■ Montenegro_Late_C_EBA_Cetina	■ Netherlands_BA	▼ SW_Iberia_BA_Afr	■ Latvia_BA	◆ Czech_Protounetice_EBA	■ Nordic_LBA	▼ Mongolia_LBA_2_Ulaanzukh
▼ Armenia_LchashenMetsamor	▲ Vatia	■ England_EMBA	■ NE_Iberia_BA	■ Lithuania_BA	◆ Czech_Unetice_EBA	■ Denmark_BA	▼ Mongolia_EIA_1_SlabGrave
▼ Lebanon_Canaanite_MBA	■ Maros	■ England_MBA	■ Formentera_MBA	■ Estonia_BA	▲ Czech_EBA	■ Sweden_IA	▼ Mongolia_EIA_2
▼ Israel_MLBA	▲ Hungary_BA	■ England_LBA	■ Mallorca_EBA	■ Estonia_BA_SG	▲ Poland_EBA	▼ North_Caucasus_MBA	▼ Mongolia_EIA_3
▼ Crete_Armenoi	▲ Hungary_MBA	■ Wales_MBA	■ Europe_LNBA	■ Estonia_BA_o	▲ Poland_BA	▼ Russia_North_Caucasus_MBA	◆ Japan_Jomon
■ Greece_Crete_Armenoi	▲ Hungary_LBA	■ Scotland_MBA	■ Nordc_LBA	■ Estonia_BA_IA	▲ Poland_Chopice_Vesele_Culture	◆ Mereke_MBA	◆ Thailand_BA
■ Mycenaean	▼ Croatia_MBA	■ Scotland_LBA	■ WEZ	■ Lithuania_LBA	● BA_Trzciniec	■ Tasbas_LBA_LowCov	
■ Greece_Mycenaean	▼ Protovillanovan	■ Nireland_LNBA	■ Lech_EBA	◆ Corded_Ware_Proto_Unetice_Poland	■ Bilina_BA	◆ Mongolia_MBA_1_Munkhkhairkhan	
▼ Egypt_New_Kingdom	■ Italy_MBA	■ C_Iberia_CA_Stp	■ Lech_EBA_Ic	■ Russia_EBA	■ Slovakia_EBA	◆ Mongolia_Khovsgol_LBA	
▼ Egypt_Late_Period	▼ Sicily_MBA	■ NW_Iberia_CA_Stp	■ Germany_BA	▲ Unetice_EBA	■ Nordic_LBA	◆ Mongolia_LBA	
▼ ASH_IA1	■ Sicily_EBA	■ Iberia_BA	■ Lech_MBA	▲ Poland_Unetice_EBA	◆ Nordic_MN_B	◆ Mongolia_BA_1	
▼ ASH_IA2	■ Sardinia_BA	■ N_Iberia_BA	■ Lech_MBA_Ic	▲ Poland_Unetice_EBA	■ Nordic_LN	◆ Mongolia_BA_2	
▼ ASH_LBA	■ Europe_LNBA	■ SE_Iberia_BA	■ CHE_EBA	▲ Germany_Unetice_EBA	■ Sweden_LN	◆ Mongolia_LBA_3_MongunTaiga	